

---

---

**CHANNEL ISLANDS CHAPTER  
THE EMBROIDERERS' GUILD OF AMERICA, INC.**

---

---



---

---

Volume XXXX **The Stitchers' Log** Issue 5  
September-October, 2022

---

---

**FROM THE BRIDGE: CO-PRESIDENTS**

A big "Thank You!" To everyone who helped at the Ventura County Fair. Mari was asked to judge. Annalee, Grace and Judith were clerks. Ellen and Judith made sure our banner stayed clean and safe. Kathy Q., Ellen, Annalee, Grace, Judith, Arielle, Margaret, Mari, Cheryl, Ann and I demonstrated at our tables — and several manned the tables on multiple days. So, Thank You! Thank You! Thank You!

Our next big even is our Open House in October. If you haven't been to a meeting recently, we've decided to hold an Open House at October's meeting. We distributed a lot of flyers at the Fair and Margaret is also attaching a copy of the flyer to the email with this Newsletter. Please print it if you can and take it to a local business to see if they could put it in their window or on a bulletin board if they have one. I will have more copies of the flyer at our meeting in September.

On the day of the Open House, please bring as many of your finished pieces as you can. We want to have at least five tables set up to display various techniques — cross-stitch, black work, stump work, crewel, white work — whatever you have, bring it to the meeting. And bring the project you're currently working on, too!

In addition to our displays at the Open House, we plan to have two opportunity drawings of fall baskets, where tickets for donations will be available. Plus, we will have two free drawings — one for each of the beautiful pieces that we have from Jo Enright's estate. We will also have snacks and refreshments so, if you're able to bring something, please do. I'll bring a sign-up sheet to September's meeting and you can always send me an email, too!

I hope to see all of you at a meeting soon — and particularly in October!

Happy stitching!  
**Michelle, Co-President**

## BIRTHDAYS

SEPTEMBER — Ellen, Amy, Patti,  
Cheryl, and Arielle

OCTOBER — Kathy Q., and Susan

## SHIP'S CREW: MEMBERSHIP

We are maintaining at 33 members.

**Patti & Susan, Co-VPs**  
**Membership & Social Correspondence**

### ON THE HORIZON

EGA Regional Seminar — Sept. 1-5, 2023  
Boston Stitch Party, Boston, MA

## UPCOMING EVENTS

August 24      General Meeting  
September 28    General Meeting  
October 26      General Meeting/Open House

## **Ventura County Fair Report**

This year I judged the fair entries with a lot of help from Judith, Annalee, and Grace as clerks. It was an interesting experience and tiring even though fair entries were down from pre-pandemic levels. There was a lot of confusion about the entry process as it was to be done totally online as per the state's requirements. Also, entries could not be moved to correct divisions if the piece was mis-entered at the time of drop-off or judging. However, our fair managers are researching for next year to clear up this point of confusion.

Here are the number of entries per Division. There was a total of 62 entries overall.

<b>Division</b>	<b>Title</b>	<b># of Entries</b>
571	Counted Cross Stitch	37
572	Embroidery, Counted Thread on Fabric	4
573	Embroidery, Openwork	3
574	Embroidery, Machine	-
575	Embroidery, Surface on Fabric	9
576	Fair Theme	1
577	Lacework	-
578	Needlepoint	3
579	Punch Needle	3
580	Latch Hook	2
581	Plastic Canvas or Perforated Paper	-

I want to encourage all of you to enter in the fair next year. Not only does it display your hard work to the community, but it demonstrates different embroidery techniques and hopefully might bring new members to our chapter.

**Mari**

**REVENUE**

Member Dues	\$2,108
Interest	\$2
Educational events	\$2,660
Fund Raising Events	\$500
Sales	\$20
Advertising	
Contributions - unrestricted	\$-
Contributions - restricted	\$-
Retreats	
Other	\$10
Transfer from Savings	\$2,627
<b>TOTAL REVENUE</b>	<b>\$7,927</b>

**EXPENSES**

National Dues	\$1,326
Region Dues	\$102
Educational events	\$2,660
Fund raising events	\$50
Cost of Sales	\$4
Rent	\$1,300
Newsletter	\$-
Administration	\$535
Officers Travel	\$-
Community Outreach	\$100
Hospitality	\$500
Retreats	\$-
Contributions/Gifts	\$150
Printing	\$200
Other	\$1,000
<b>TOTAL EXPENSES</b>	<b>\$7,927</b>

**REVENUE**

Member Dues	34 members - covers fish bowl and fair winner
Interest	from 2 savings accounts
Educational events	<b>see outbreak below</b>
Fund Raising Events	Includes Opportunity Drawings and GCC
Sales	Pins
Advertising	
Contributions - unrestricted	
Contributions - restricted	
Retreats	
Other	Name Tag fines

**EXPENSES**

National Dues	\$39 per member
Region Dues	\$3 per member
Educational events	To match Income
Fund raising events	\$30 Raffle license, Ways and Means Tickets
Cost of Sales	Sales Tax
Rent	
Newsletter	
Administration	<b>See breakout below</b>
Officers Travel	No travel in 2023
Community Outreach	
Hospitality	Supplies, decorations, birthday cake, open house
Retreats	
Contributions/Gifts	Either to the church or to a memorial
Printing	For large printing jobs at Kinkos or Staples
Other	Computer, hybrid meeting equipment

**Educational Events**

GCC	\$320.00 1 GCC [Cost covered by Educational Fund]
Programs	\$840.00 7 programs @ \$120 each
Workshop	\$1,500.00 Margaret Bendig

**TOTAL \$2,660.00****ADMINISTRATION**

Supplies	\$20.00
PO Box	\$182.00
Website/domain	\$125.00
zoom	\$150.00
postage	\$58.00

**TOTAL \$535.00**

## PSR Report

The Fall PSR Region meeting was held on October 2, 2021 via Zoom. All chapters were present. We were treated to a talk from Wendy Lyn regarding the importance of continuing Outreach activities. Membership in EGA as a whole has fallen by 2000 members since last year's Fall Region meeting. For more details regarding marketing, please contact [marketing@EGAUSA.org](mailto:marketing@EGAUSA.org). When thinking of Outreach activities, it's important to remember our goal: Recruit new members; Teach needlework techniques; Do good work.

Some chapters contribute to Food Banks, some to homeless chapters, some, like CICEGA, do many different things. It's important, whatever your chapter does, that EGA is promoted.

No definite answers were give to the Copyright issue. It was mentioned that any number of designs are not copyrighted, or a designer has given blanket approval to show photos of finished projects. Otherwise, it's generally easy to contact a designer for approval.

A new logo for PSR has not been chosen. Two different designs were submitted, but both had their drawbacks, so it's back to the drawing board. If you are interested in submitting a design for consideration contact Eilene Tighe-Stage for details. EGA will not allow any chapter to use the stylized "EGA" any longer, so a new design must be chosen.

Study boxes are available for chapter use. Details can be found on the PSR website.

The Northern AZ Stitchers chapter has disbanded because not enough members were willing to step up to fill the three required offices of President, Secretary, and Treasurer.

### Eilene, Region Rep

Editor's Note: I'm sorry I didn't include the PSR Report in the last CICEGA newsletter.

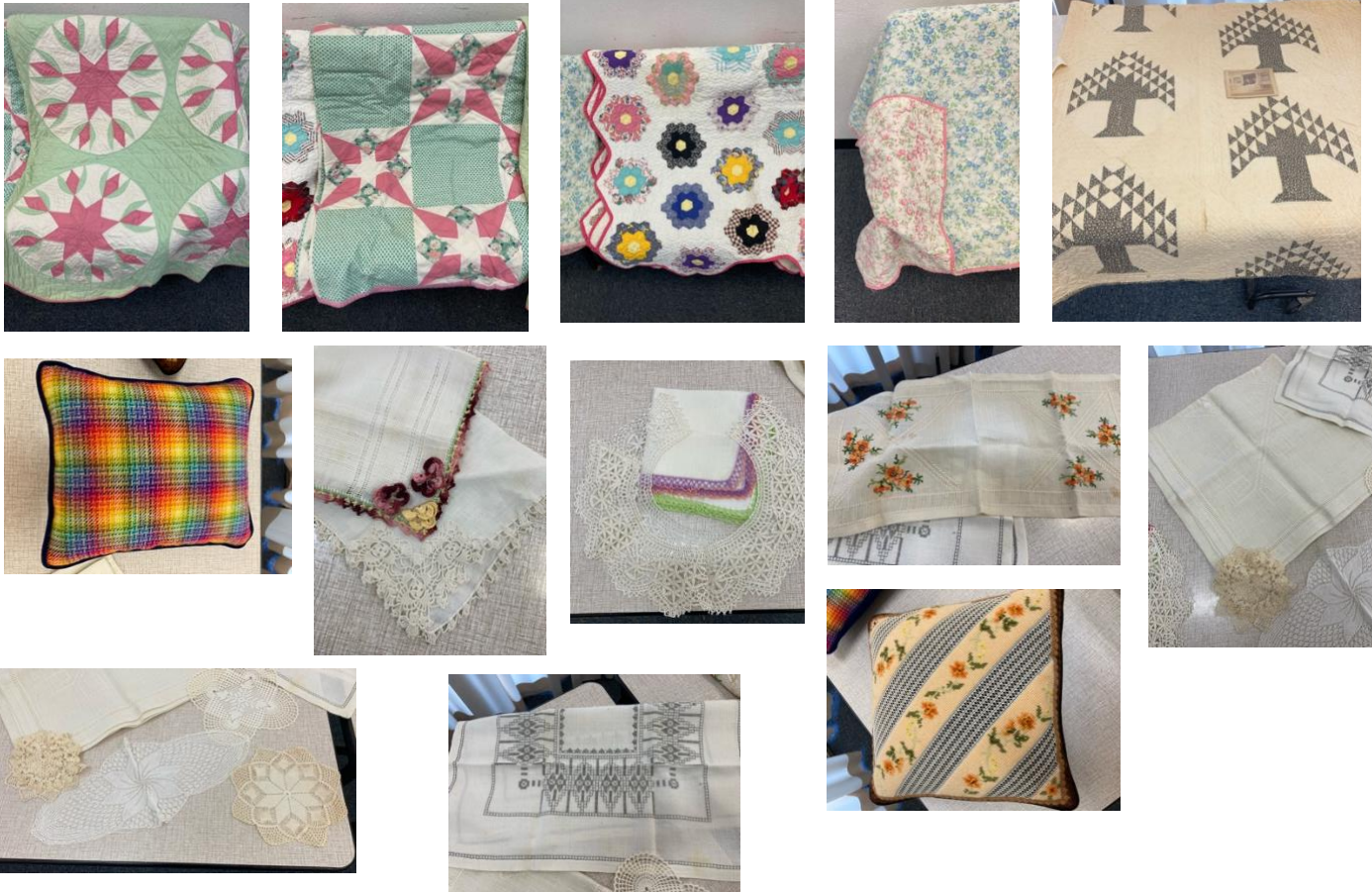
### New PSR Logo

Six potential logos were up for a round two vote at our last CICEGA meeting. The majority of members present voted for this one.



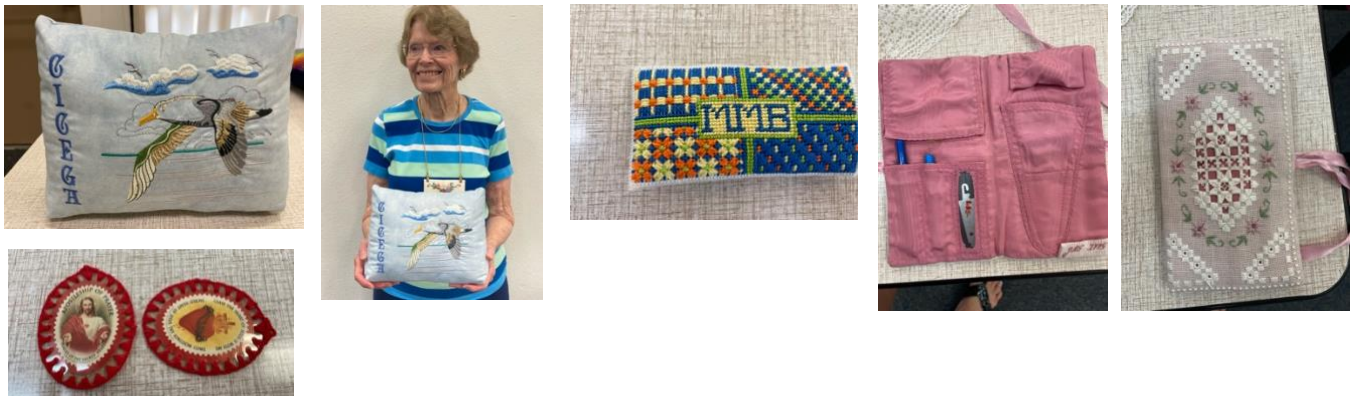
## SHOW AND TELL — JULY

### A Blast from the Past



Shared by: Margaret, Eilene, Annette, Annie, and Kathy Q.

### Finished Projects



Shared by: Janet and Michelle. Janet sewed this pillow especially for us so we can display it on tables when we're stitching in public and don't have the space or ability to put up our banner. Beautiful work, ladies!! Thanks for sharing.

## CICEGA Demonstrates at Ventura County Fair

After three years of fair cancellations, CICEGA was excited to return to the Ventura County Fair doing needlework demonstrations. The Ventura Fairgrounds are adjacent to Ventura's Surfers' Point, so it's no surprise that the theme was "A Country Fair with Ocean Air." There was a section in the Home Arts building dedicated to ocean and nautical themes.

Many in our chapter demonstrated and promoted joining EGA. Thank you to the following members who demonstrated: Ellen, Mari, Margaret, Michelle, Grace, Judith, Annalee, Cheryl, Ann, Kathy Q and Arielle. Our chapter also displayed examples of cross stitch, bead work, Brazilian embroidery, Battenberg lace, cutwork, drawn thread, rice stitch, needle tatting, blackwork and queen stitch.

We enjoyed meeting with the fairgoers and answering their questions. Many folks had members of their family who had done needlework in the past and loved sharing their stories with us. Twenty-two of the many fairgoers who stopped by our tables provided their emails to find out more about our chapter and upcoming open house.

The Home Arts building also had other forms of needle arts including knitting, crocheting, weaving, lace, quilting and leathercraft. Our chapter had many participants who entered several types of needle work. We know of at least 15 awards (mostly first places!) to our chapter. The special Channel Islands Award was presented to Elena Ramirez for an original design of counted cross stitch; hopefully, Elena will be able to come to our general meeting to show us her work in person. It's beautiful!

CICEGA members had a great time at the fair sharing our enthusiasm for stitching, and we're looking forward to returning to the fair next year.

**Kathleen Q.**  
Co-Outreach Chair

### Photos From the Fair



## SHOW AND TELL — AUGUST

### Finished Projects



Shared by: Annie, Judith, and Michelle  
These projects turned out great! Thanks for sharing!!



---

# YOU'RE INVITED!

---

The Channel Islands Chapter  
of the Embroiderers' Guild of America is  
having an Open House

When: Wednesday, October 26th @ 10:00 a.m.

Many Types of Embroidery will be  
Demonstrated and on Display  
Refreshments will be served



Where: United Methodist Church  
291 Anacapa Drive  
Camarillo, CA

Email: [president@channelislandsega.org](mailto:president@channelislandsega.org) for more information  
CICEGA is a 501(c)(3) educational, non-profit organization

### Officers and Standing Committees

Co-Presidents	Michelle & Judith	Hospitality	Kathy W.
V.P. Programs	Ann & Vanessa	Historian	Vanessa
V.P. Membership	Susan & Patti	Publicity	Michelle
Treasurer	Mari & Suzy	Newsletter	Margaret
Recording Secretary	Cheryl	Region Rep	Eilene
Parliamentarian	Janet	Ways & Means	Jacky
Community Outreach	Amy & Winnie	Website	Louise
Community Demos	Kathy Q.	Show & Tell	Annalee

### Channel Islands Chapter Membership Form

Name \_\_\_\_\_ Membership Number \_\_\_\_\_  
 Address \_\_\_\_\_ Phone \_\_\_\_\_ Cell Phone \_\_\_\_\_  
 City/State/Zip \_\_\_\_\_ Birthday (Mo. Day) \_\_\_\_\_  
 Email \_\_\_\_\_

Renewing Members \_\_\_\_\_ Primary Member...\$62.00  
 Check one \_\_\_\_\_ Plural Member, PSR Chapter Affiliation...\$20.00  
 \_\_\_\_\_ Plural Member, Outside PSR Chapter Affiliation \$23.00

**New members:** Please choose the type of membership and the month in which you are joining to determine the dues amount. Please circle the amount.

Month	Primary	Plural (Out of Region)	Plural (In Region)
Jan, Feb, Mar	\$15.50	\$5.75	\$5.00
Apr, May, Jun	\$62.00	\$23.00	\$20.00
Jul, Aug, Sep	\$46.50	\$17.25	\$15.00
Oct, Nov, Dec	\$31.00	\$11.50	\$10.00

Annual dues are \$62: \$39 to EGA National, \$3 to Pacific Southwestern Region and \$20 to Channel Islands Chapter.

If you are new to Channel Islands Chapter EGA, did a member invite you to join?

Yes  No If yes, who? \_\_\_\_\_

Make check payable to **Channel Islands Chapter EGA** or **CICEGA**. Please mail your check and this form to CICEGA, Attn: Membership, P.O. Box 1675, Camarillo, CA 93010-1675.

## Embroidery Guild of America

**PSR Director**

Marilyn Evans  
[Evans.marilyn@gmail.com](mailto:Evans.marilyn@gmail.com)

**PSR EDUCATION CHAIR**

Mary Louise Eck

**EGA National President**

Karen Hamilton  
[egapres@ega.org](mailto:egapres@ega.org)

**EGA National Headquarters**

1205 E Washington St., Suite 117  
Louisville, KY 40206

502-589-6956  
(call before 2:00 p.m. PST)

**EGA Website**

<https://egausa.org>

User ID is your email

**CHANNEL ISLANDS** is a chapter of The Embroiderers' Guild of America, Inc.

**GENERAL MEMBERSHIP MEETINGS** are held on the fourth Wednesday of each month, January through October. The November/December meeting is held the first Wednesday of December. The meetings are held at Camarillo United Methodist Church, 291 Anacapa Drive, Camarillo, CA, from 10:00 am to 1:00 pm. In addition to the business meeting, there is usually a program such as a workshop demonstration, lecture, or slide show. Bring something to stitch. Social with treat 9:30 am – 10:00 am.

**BOARD MEETINGS** are held on the second Wednesday of every other month at 10:00 am in the home of the president. Any member may attend. Please call the president in advance.

**MINI GROUP MEETINGS** are an informal get together held in members' homes and other meeting places where you can stitch, exchange ideas and hints, and get better acquainted. For information on the various groups, call the Mini Group Liaison.

**ACTIVITIES** – In addition to meetings, the Chapter sponsors workshops, tours, lectures, etc. Philanthropy projects are many and varied.

**NAMETAG** – Each member is to stitch a nametag, including her first and last name, to be worn at meetings. If you are not wearing your nametag, you are subject to a \$.25 fine. New members have a six-month leeway.

**SHARING NEWSLETTERS:** Other newsletters should be mailed to Channel Islands Chapter, EGA, P. O. Box 1675, Camarillo, CA 93011-1675. The newsletter is printed bi-monthly.

**REPRINT PRIVILEGES** are granted to all EGA Chapters for all non-copyrighted material contained in this newsletter. Please give credit to the author and to Stitches' Log, and send a copy to P.O. Box 1675, Camarillo, CA. 93011-1675. Reprinting of copyrighted material will necessitate obtaining author's permission.

**PHOTOGRAPHS:** All photographs of members are printed with their written permission.

**Mini-Groups** alternate Fridays and Saturdays monthly. Groups meet on Saturdays on odd-numbered months, and Fridays on even-numbered months from 10:00 a.m.-2:00 p.m. See Mini-Groups for location and to RSVP.

**General Meetings:** Social — 9:30 a.m., Business Meeting and Program 10:00 a.m., fourth Wednesday, Camarillo United Methodist Church, 291 Anacapa Drive, Camarillo, CA. 93010