
**CHANNEL ISLANDS CHAPTER
THE EMBROIDERERS' GUILD OF AMERICA, INC.**



Volume XXXX **The Stitchers' Log** Issue 3
March-April, 2022

FROM THE BRIDGE: CO-PRESIDENTS

Wow! Has it ever been a busy couple of months! We've had so many great learning and stitching opportunities: mini-groups, Group Correspondence Courses (GCCs), General Meetings, stitching time at the Fabric Shoppe and, of course, our own time working on independent projects. There is more fun on the horizon, too! As I write this, some of us are finishing the Hardanger GCC, some have started the Papillon GCC, our Spring Tea is just three weeks away, Mari will begin teaching the Ribbonere Scissor Case class in May and then the Scandinavian Festival will be in June – not to mention the Ventura County Fair is coming up, too.

Kathy Quinn hosted our first mini group in February, I hosted the one in March, Eilene is hosting the one in April and Cheryl will host in May. The mini-groups are so fun and relaxing. It's a great way

to socialize while stitching away. We've also learned that we can stitch at the Fabric Shoppe in Camarillo on Fridays. So, if there's a time when no one is able to host a mini-group, or if some of us just want to get together, Friday at the Fabric Shoppe is a good option. It costs \$5.00 but the classroom is nice and you can stay there for as many hours as you like.

Another unique and enjoyable activity we had was the Kumihimo class taught by Judith in March. 13 people participated and, once we figured out that clockwise or counterclockwise didn't matter as long as you were consistent, we were able to make beautiful braids. There are some wonderful things you can make with Kumihimo, including bracelets, necklaces, key chains and so on. I think it would also look pretty as trim for pillows, too. You can add different types of beads and you can finish the braid by either tying it off or adding end caps and clasps for the project you're doing.

I decided to play around with beads and then made my first attempt from Judith's class into a key chain that I could use for the key to the church cabinet:



We are so fortunate to have so many activities and learning opportunities to participate in. We learn from each other and always have a great time while doing so. I look forward to seeing you at any one (or all!) of our events.

In the meantime, keep on stitchin'!

Michelle, Co-President

SHIP'S CREW: MEMBERSHIP

We are maintaining at 36 members.

Patti & Susan, Co-VPs
Membership & Social Correspondence

ON THE HORIZON

ANG 2022 Seminar — July 29-Aug. 5, 2022
 Westin La Paloma, Tucson, AZ

EGA National Seminar — Aug. 24-28, 2022
 Broadway Bound, New York, NY

EGA Regional Seminar — Sept. 1-5, 2023
 Boston Stitch Party, Boston, MA

UPCOMING EVENTS

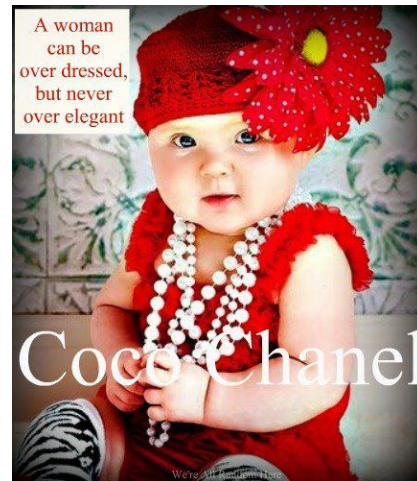
May 25 General Meeting

June 29 General Meeting

BIRTHDAYS

MAY — Ganet, Sharon, Ann, Eilene, and Cynthia

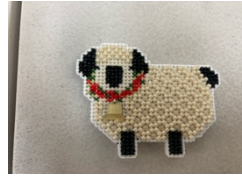
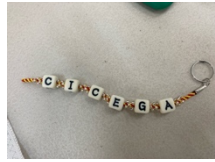
JUNE — Michelle and Rosemary



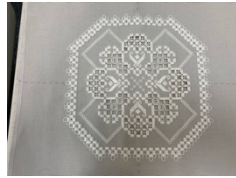
SHOW AND TELL

April

Finished Kumihimo braids from March meeting



GCC Hardanger Projects



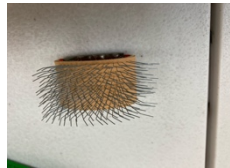
March



" ASIDE FROM YOUR PLASTIC CANVAS PROJECTS, WHAT ELSE HAVE YOU BEEN DOING SINCE YOU RETIRED ? "

These are a Few of Our Favorite Things

Thank you ladies for bringing some of your favorite stitching gadgets to share.



WELCOME TO THE SPRING TEA!

Thank you, Eilene, for the beautiful decorations!
The food was yummy!!!



MEMBERSHIP REPORT

Please check your profile on the EGA website to make sure the information there is correct. If anything needs to be updated, you can (1) do it directly online while you are on the EGA website, (2) email the changes to Tonya Parks at EGA (typarks@egause.org), or (3) give the changes to me or Patti, your Membership Chairs, and we can send the updates to Tonya. If there are any changes in the future (address, email, phone number, etc.) please remember to update that information also.

Susan

Treasurer's Report

	Mar 31,22
ASSETS	
Current Assets	
Checking/Savings	
Wells Fargo Bank Checking	5,592.84
Wells Fargo MM Educ/Program	5,501.98
Wells Fargo MM Savings	11,825.22
Total Checking/Savings	22,920.04
Total Current Assets	22,920.04
TOTAL ASSETS	22,920.04
LIABILITIES & EQUITY	
Equity	
Opening Bal Equity	22,523.81
Retained Earnings	387.64
Net Income	8.59
Total Equity	22,920.04
TOTAL LIABILITIES & EQUITY	22,920.04

Embroidery Guild of America

PSR Director

Marilyn Evans
Evans.marilyn@gmail.com

PSR EDUCATION CHAIR

Mary Louise Eck

EGA National President

Karen Hamilton
egapres@ega.org

EGA National Headquarters
 1205 E Washington St., Suite 117
 Louisville, KY 40206

502-589-6956
 (call before 2:00 p.m. PST)

EGA Website

<https://egausa.org>

User ID is your email

Officers and Standing Committees

Co-Presidents	Michelle & Judith	Hospitality	Kathy W.
V.P. Programs	Ann & Vanessa	Historian	Vanessa
V.P. Membership	Susan & Patti	Publicity	Michelle
Treasurer	Mari & Suzy	Newsletter	Margaret
Recording Secretary	Cheryl	Region Rep	Eilene
Parliamentarian	Janet	Ways & Means	Jacky
Community Outreach	Amy & Winnie	Website	Louise
Community Demos	Kathy Q.	Show & Tell	Annalee

CHANNEL ISLANDS is a chapter of The Embroiderers' Guild of America, Inc.

GENERAL MEMBERSHIP MEETINGS are held on the fourth Wednesday of each month, January through October. The November/December meeting is held the first Wednesday of December. The meetings are held at Camarillo United Methodist Church, 291 Anacapa Drive, Camarillo, CA, from 10:00 am to 1:00 pm. In addition to the business meeting, there is usually a program such as a workshop demonstration, lecture, or slide show. Bring something to stitch. Social with treat 9:30 am – 10:00 am.

BOARD MEETINGS are held on the second Wednesday of every other month at 10:00 am in the home of the president. Any member may attend. Please call the president in advance.

MINI GROUP MEETINGS are an informal get together held in members' homes and other meeting places where you can stitch, exchange ideas and hints, and get better acquainted. For information on the various groups, call the Mini Group Liaison.

ACTIVITIES – In addition to meetings, the Chapter sponsors workshops, tours, lectures, etc. Philanthropy projects are many and varied.

NAMETAG – Each member is to stitch a nametag, including her first and last name, to be worn at meetings. If you are not wearing your nametag, you are subject to a \$.25 fine. New members have a six-month leeway.

SHARING NEWSLETTERS: Other newsletters should be mailed to Channel Islands Chapter, EGA, P. O. Box 1675, Camarillo, CA 93011-1675. The newsletter is printed bi-monthly.

REPRINT PRIVILEGES are granted to all EGA Chapters for all non-copyrighted material contained in this newsletter. Please give credit to the author and to Stitches' Log, and send a copy to P.O. Box 1675, Camarillo, CA. 93011-1675. Reprinting of copyrighted material will necessitate obtaining author's permission.

PHOTOGRAPHS: All photographs of members are printed with their written permission.

Mini-Groups alternate Fridays and Saturdays monthly. Groups meet on Saturdays on odd-numbered months, and Fridays on even-numbered months from 10:00 a.m.-2:00 p.m. See Mini-Groups for location and to RSVP.

General Meetings: Social — 9:30 a.m., Business Meeting and Program 10:00 a.m., fourth Wednesday, Camarillo United Methodist Church, 291 Anacapa Drive, Camarillo, CA. 93010

